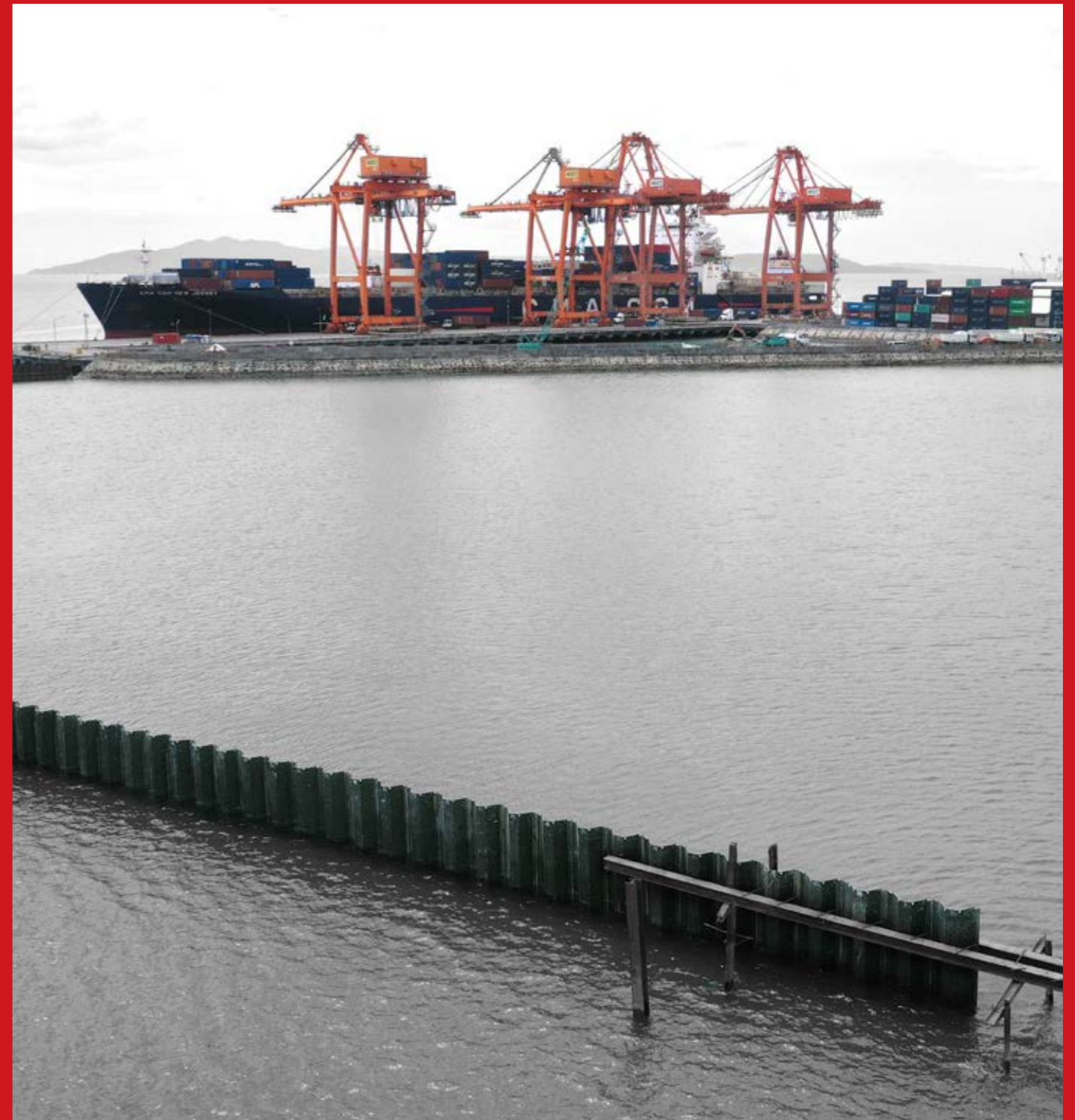


GET IN TOUCH WITH US.



SINGAPORE

MLION CORPORATION PTE. LTD.
21 Bukit Batok Crescent
#29-76 WCEGA Tower
Singapore 658065

Tel: +65 6334 3762
Fax: +65 6334 3755
Email: sales@mlioncorp.com

INDONESIA

MLION CORPORATION PTE LTD
AXA Tower 36th Floor Unit 5-6,
Kuningan City, Jl. Prof. Dr. Satrio Kav. 18,
Kuningan, South Jakarta 12940, Indonesia

Tel: (+62) 21 5030 1010
Fax: (+62) 21 2988 8201
Email: indonesia@mlioncorp.com

MALAYSIA

MLION TRADING (MALAYSIA) SDN BHD
Room 767, Level 7, Oasis Wing,
Brunfield Oasis Tower 3
No. 2, Jalan PJU 1A/7A, Oasis Square
Oasis Damansara, 47301 Petaling Jaya
Selangor Darul Ehsan

Tel: +60 (3) 7848 5830
Email: msia@mlioncorp.com

KUCHING / EAST MALAYSIA
Sublot 21, 1st Floor, Media Setia
Raja Commercial Center,
Jalan Setia Raja, 93350 Kuching
Sarawak Malaysia

Email: msia@mlioncorp.com

PHILIPPINES

**CERTUSO STRUCTURAL
SPECIALISTS CORP.**
Unit 806, One Park Drive Office
11th Drive, Corner 9th Ave,
Bonifacio Global City,
Taguig 1630 Philippines

Tel: +(63) 2 368 9619
Email: phil@mlioncorp.com

THAILAND

MLION CORPORATION (THAILAND) CO., LTD.
Office 515, No. 999 Gaysorn Building,
5th Floor Unit 5B-1,
Ploenchit Rd., Lumpini, Patumwan,
Bangkok 10330, Thailand

Tel: (+66) 2 624 0565
Fax: (+66) 2 624 0509
Email: thai@mlioncorp.com

TAIWAN

MLION CORPORATION PTE LTD (REP. OFFICE)
Rm. 1, 5F., No. 1, Baosheng Rd.,
Yonghe Dist., New Taipei City 234,
Taiwan (R.O.C.)

Tel: +88 6222 325252
Email: taiwan@mlioncorp.com

CHINA

MLION CORPORATION (CHINA) CO., LTD.
Jiuzhou Plaza #604, No. 143 Jiangyang
Middle Road, Yangzhou, Jiangsu,
China 225004

Tel: (+86) 514 8239003
Fax: (+86) 514 8239003
Email: china@mlioncorp.com

You can also check our Social Media Accounts!



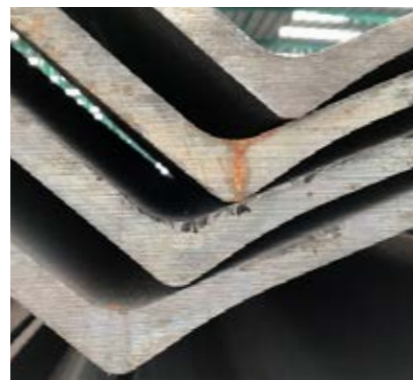
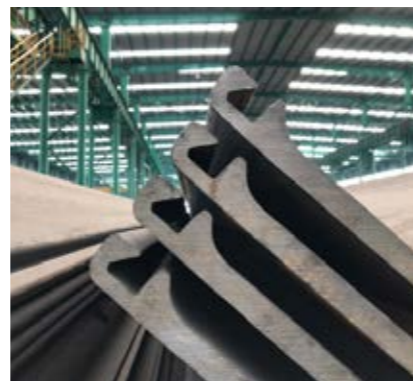
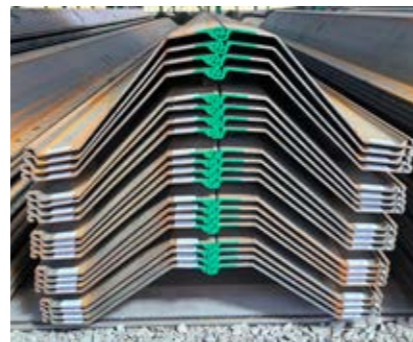
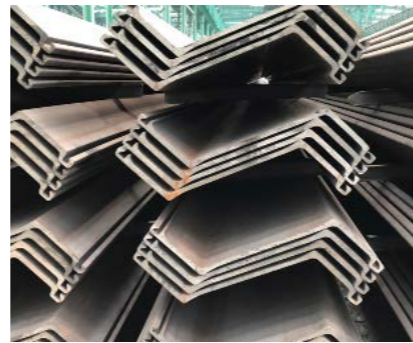
Mlion Corporation
www.mlioncorp.com

HOT ROLLED Z PILE CATALOG

2021 - 2022



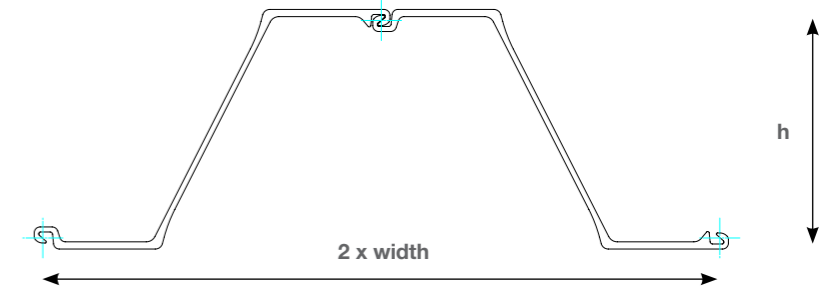
INNOVATIVE
SOLUTIONS
REDEFINED



MHZ HOT ROLLED

Manufacturing Standards: EN 10248

S270GP / S355GP / S390GP / S430GP
Lengths up to 33m long in Single or Double Pile Configuration



Section	Width a mm	Height h mm	Thickness Flange/Web mm	Section Area cm ² /m	Weight kg/m	Weight kg/m ²	Moment of Inertia cm ⁴ /m	Section Modulus cm ³ /m	Bending Moment S355GP kNm/m
MHZ12-1	770	343.5	8.6/8.5	120.8	72.8	94.5	21496	1252	444.46
MHZ13-1	770	344	9.1/9	126.5	76.2	99	22433	1304	462.92
MHZ14-1	770	344.5	9.6/9.5	132.2	79.6	103.4	23370	1357	481.74
MHZ17-1	700	420	8.5/8.4	132.8	73.3	104.7	36425	1735	615.93
MHZ18-1	700	420.5	9.1/9	139.1	76.7	109.6	38001	1807	641.49
MHZ19-1	700	421	9.6/9.5	145.4	80.2	114.6	39578	1880	667.40
MHZ20-1	700	421.5	10.1/10	151.7	83.7	119.5	41155	1953	693.32
MHZ24-2	700	459.2	11.3/11.2	174.4	95.8	136.9	55949	2437	865.14
MHZ26-2	700	460.2	12.3/12.2	187.4	103	147.1	59843	2601	923.36
MHZ27-1	700	460.7	12.8/12.7	193.6	106.4	152	61641	2676	949.98
MHZ28-2	700	461.2	13.3/13.2	200.4	110.1	157.3	63740	2764	981.22
MHZ36-1	700	499.2	15.1/11.2	216.1	118.7	169.6	89753	3596	1276.58
MHZ38-1	700	500.2	16.1/12.2	230.2	126.5	180.7	94984	3798	1348.29
MHZ40-1	700	501.2	17.1/13.2	244.4	134.3	191.8	100219	3999	1419.65
MHZ42-1	700	499.2	18.1/14	260.2	143	204.2	105453	4228	1500.94
MHZ44-1	700	500.2	19.1/15	274.3	150.7	215.3	110942	4436	1574.78
MHZ46-1	700	501.2	20.1/16	288.5	158.5	226.5	116159	4635	1645.43
MHZ48-1	700	503.2	22.1/15	290	159.3	227.6	120467	4788	1699.74
MHZ50-1	700	504.2	23.1/16	303.4	166.7	238.2	125358	4973	1765.42
MHZ52-1	700	505.2	24.1/17	317.2	174.3	249	130403	5162	1832.51

COMPARISON TO U TYPE JIS PILES in SYW295

Type	Width a mm	Height h mm	Thickness Flange/Web mm	Section Area cm ² /m	Weight kg/m	Weight kg/m ²	Moment of Inertia cm ⁴ /m	Section Modulus cm ³ /m	Bending Moment kNm/m
Type II	400	100	10.5	61.18	48	120	8740	874	257.83
Type III	400	125	13.0	76.42	60	150	16800	1340	395.30
Type IIIA	400	150	13.1	74.4	58.4	146	22800	1520	448.40
Type IV	400	170	15.5	96.99	76.1	190	38600	2270	669.65
Type VL	500	200	24.3	133.8	105.0	210	63000	3150	929.25
Type VIL	500	225	27.6	153.0	120.0	240	86000	3820	1126.90

Weight Advantage of MHZ Sheet Piles vs JIS Type U Sheet Piles

- MHZ12-1 vs Type 2 (21% Less Weight 43% Stronger)
- MHZ13-1 vs Type 3 (34% Less Weight)
- MHZ 24-2 vs Type 4 (27% Less Weight)

TARGET

- Waterfront Projects
- Bridges
- Infrastructure
- Permanent Structures
- Rail and Tunnels
- Bridges and Wharfs
- Harbours
- River and Flood Control
- Substructure