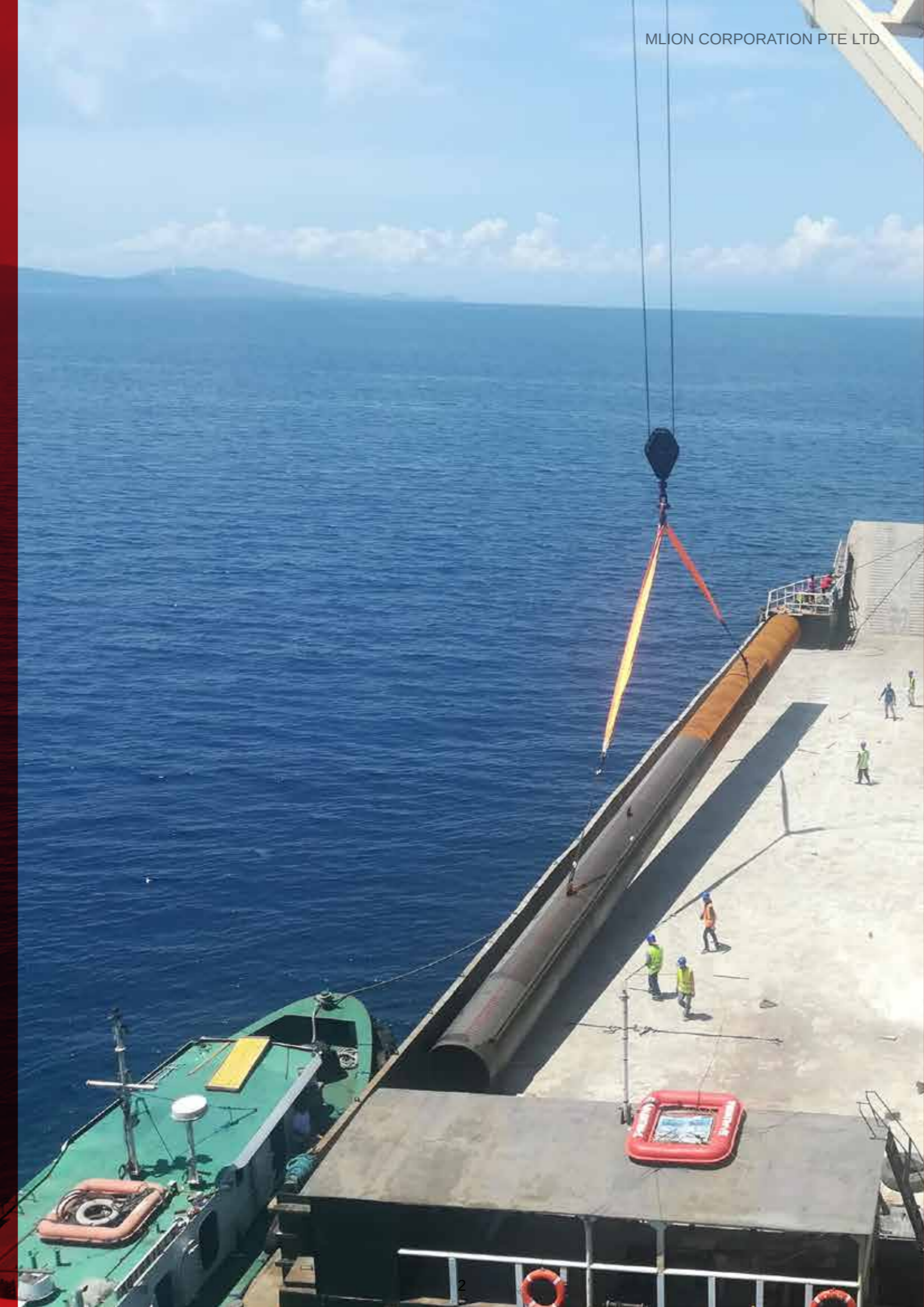




MLION CORPORATION

Corporate Profile
2019

FOUNDATION SOLUTIONS FOR TOMORROW



29

RANKED OUT OF TOP 50 SME IN SINGAPORE FOR OVERSEAS REVENUE

287

RANKED OUT OF TOP 1000 SME IN SINGAPORE IN REVENUE

71

RANKED OUT OF TOP 1000 SME IN % CHANGE IN TOTAL ASSETS

What We Do

MLION CORPORATION PTE. LTD. is a Foundation Solutions company focusing on Ports and Waterfront development, Civil Excavations and Power Generation projects in the Asian Region

Civil and Marine Infrastructure - they are the basic building block that every economy requires to thrive on. At MLION CORPORATION PTE. LTD., we help to provide that.

We Source, Value Add, Store and Deliver solutions that enable economies to grow and prosper. We do so by providing Solutions For Tomorrow.

Founded in 2011, our vision is to provide a cutting edge customized steel solutions for customers in the construction market. Our focus has been on Ports and Waterfront development, Civil Excavations and Power Generation related infrastructure.

We do so with products such as Steel Sheet Piles, Steel Pipes, Tie Rods, Long and Flat Steel Products, Crane Rails and its Accessories, Fender and Bollards, Bitumen and Heavy Machinery.

Every project has its own unique requirements and constraints. This could be a challenging delivery schedule, a difficult to reach site location, a tight budget for the project, or special requirements on lengths and specifications on the products required.

MLION CORPORATION listens, partners and creates unique solutions, to assist customers by solving these problems while increasing productivity and reducing cost effectively. It is how we provide these solutions that makes us a market leader in our industry.

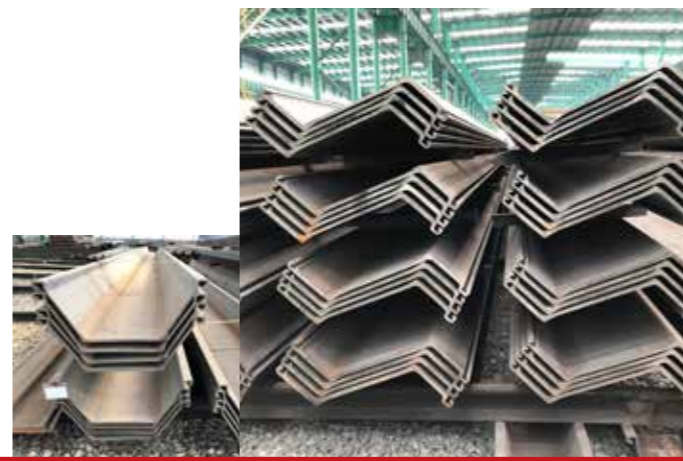
Our team sources only from the best mills in the industry, with excellent track record and safety. We collaborate with Intertek Moody and Bureau Veritas to provide customers with an added level of inspection, quality and assurance.

We also represent many of these suppliers exclusively in the region and therefore provide long term cooperation and stability in the supply chain.

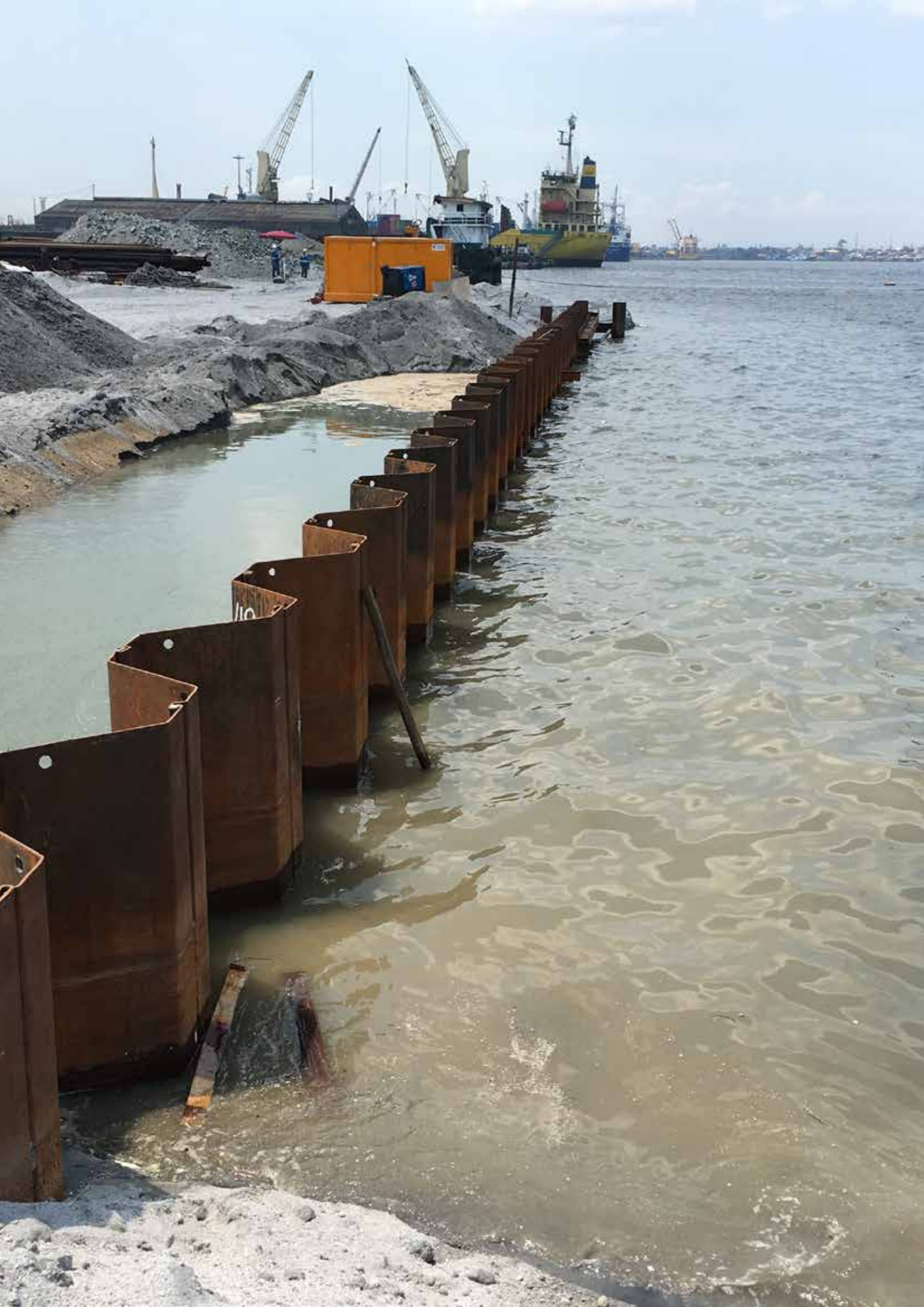
We value add to the products we supply by customizing the products for each project. Customization includes, special steel grade requirements, specific lengths and fabrication on request.

MLION CORPORATION operate local offices in the region to better access markets, and provide downstream services such as warehousing, logistics, financing and quick response time to the projects.

Page Facing: Road upgrading works in Singapore.



We Source, Value Add, Store and Deliver solutions that enable economies to grow and prosper.



AGE OLD BUSINESS

Redefined

Providing Solutions for Tomorrow: Being the link in the global supply chain, we provide customers with access to the global trade. We provide the vital link between producers of materials to the end users who consume it. We do so by adding value, by customizing and value engineering, with exceptional performance and customer service.

As a company we believe that we provide customers with a solution and not a product or commodity. In an increasingly competitive market, our ability to respond and shift with varying patterns of demand provides the key differentiation in our market offering.

Investment: We continually invest in our people, our downstream network and channelization to become the forefront market leading physical merchant. Our shipping and chartering team provides us with access to vast network of trade routes previously not possible. We consistently move challenging and out of gauge products to remote locations around the world.

Another key aspect of our downstream offering is our ability to manage risk for the customer. We can provide fixed rate contracts, floating rate contracts, future pricing and financial hedging to the materials which we supply.

Accreditation: MLION CORPORATION is an ISO 9001:2015 accredited company and quality assurance is an integral part of our core values. Our inspectors are constantly in the factories to ensure that quality is upheld and safety is adhered to. For projects that we are actively involved, our staff are on site to assist should a need arise.

Recognition: In 2018, we were awarded the prestigious SME 1000 award honoring the top SME companies in Singapore. This award continues to display our commitment to having a regional presence and our drive to maintain our position as a market leader in the industry.

Page Facing: Reclamation works and wharf construction in Manila.



OUR TRADING ACTIVITY

CORE PRODUCTS

HOT ROLLED STEEL SHEET PILES

- Z Shape
- U Shape
- Hat Type Sheet Piles

COLD FORMED STEEL SHEET PILES

- Z Shape
- U Shape
- Omega Shape

STEEL PIPES

- Spirally Welded
- Longitudinally Welded (JCOE / UOE)
- Three Rolled Bend (TRB)
- Seamless Pipes

INTERLOCKING STEEL PIPES

- O-Pile Interlocking
- P-P, C-T, L-T Interlocks
- Internal Clutch Plate - T Interlocks (Pipe Roof Application)
- Down The Hole Drilling Method Interlocks

SPECIALIZED INTERLOCKS

- O-Pile Interlocks
- Steel Pipe - Sheet Pile Interlocks (C9 / CP2)
- Corner Pile Interlocks (CP1)

UPSET END TIE RODS

- D2 and Type II Tie Rods

CRANE RAILS & ACCESSORIES

- Gantrex Rails Clips, Pads, Bolts, Plates and Grout
- Crane Rails
- Installation

LONG & FLAT STEEL PRODUCTS

- Beams, Angle, Channels, HRC, Plates

DECK FURNITURE

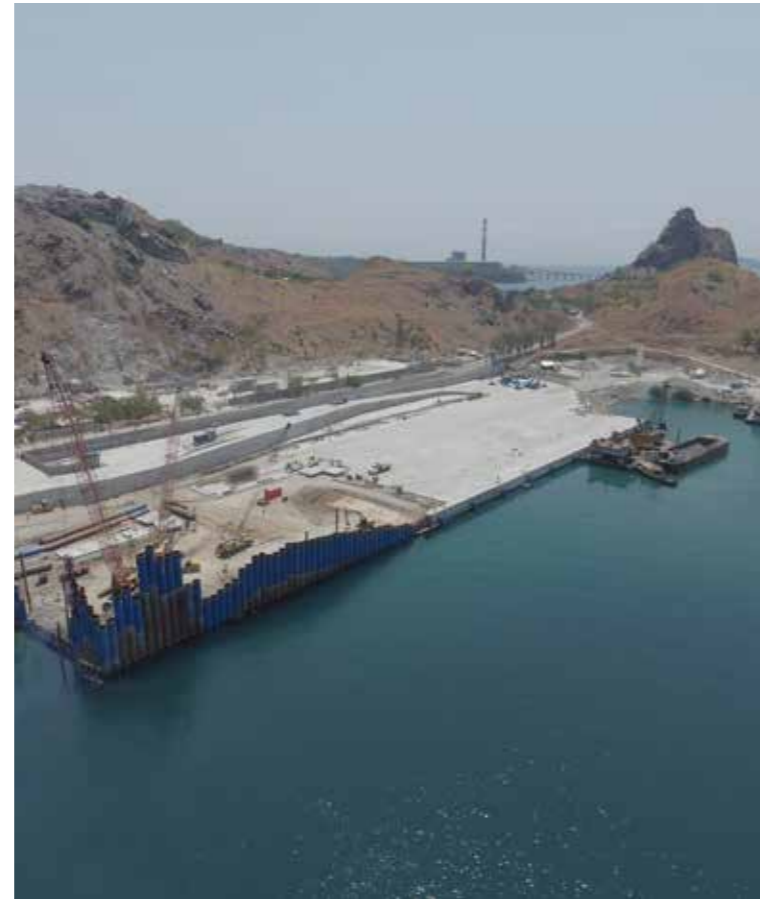
- Fenders
- Bollards

HEAVY MACHINERY

- Vibratory Hammers
- Mobile TRB Pipe Mill



PORT
WHARF
JETTY
TERMINALS
RORO FACILITY
BREAKWATER
RIVER PROTECTION
FLOOD CONTROL
SEAWALL
RECLAMATION
BRIDGES
COFFERDAM
TUNNELLING
INTAKE AND OUTFALL
RAILS
RAIL WELDING
DECK FURNITURE
MACHINERY



Our Clients

- China Harbour Engineering
- Manila North Harbour Ports Inc.
- Seasia Nectar Port Services Inc.
- HSL Constructors Pte Ltd
- Shanghai Tunnel Engineering Corp.
- McConnell Dowell South East Asia
- Qingdao Municipality Construction
- Penta Ocean Construction Co., Ltd.
- Daelim Construction
- KTC Civil Engineering
- Lum Chang Construction
- Marina Technologies & Construction
- Maeda Construction
- Bachy Soletanche Construction
- Atlantic Gulf & Pacific Company Inc.
- Primary Structures Corporation
- Ensul Engenharia S.A.
- Sem Calaca Power Corporation
- Sunwest Construction and Development Corporation
- Baku Shipyard

Top Right Clockwise: 1. Seasia Nectar Port Services Inc in Mariveles, Philippines. 2. Philippines Port Authority in Tacloban, Philippines
3. Manila North harbour Port Inc. in Tondo Manila, Philippines.



GET IN TOUCH

MLION CORPORATION PTE. LTD.

SINGAPORE
21 BUKIT BATOK CRESCENT
#06-70 WCEGA TOWER
SINGAPORE 658065

PHONE: +65 6334 3762
MAIL: sales@mlioncorp.com
WEB: www.mlioncorp.com

PHILIPPINES
LEVEL 17, AYALA OFFICE TOWER
6750 AYALA AVENUE
MAKATI 1224, PHILIPPINES

PHONE: +63 2 755 7627
MAIL: phil@mlioncorp.com

SINGAPORE | PHILIPPINES | MALAYSIA | INDONESIA | TIMOR LESTE | BRUNEI | AUSTRALIA