



Hot Rolled Sheet Piles

Weight Advantage of MHZ Sheet Piles vs JIS Type U Sheet Piles

- ✓ MHZ12-1 vs Type 2 (21% Less Weight 43% Stronger)
- ✓ MHZ13-1 vs Type 3 (34% Less Weight)
- MHZ 24-2 vs Type 4 (27% Less Weight)

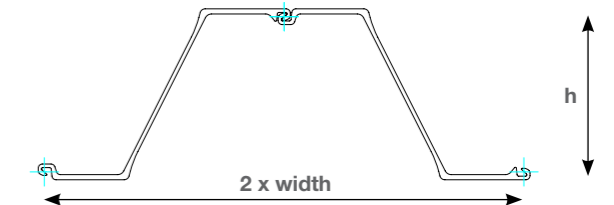


Target

- ✓ Waterfront Projects
- ✓ Infrastructure
- ✓ Rail and Tunnels
- ✓ Harbours
- ✓ Substructure
- ✓ Bridges
- ✓ Permanent Structures
- ✓ Bridges and Wharfs
- ✓ River and Flood Control

Z and U Type Sheet Piles with Larssen interlocks have been used in Europe for over 40 years. Their advantage lies in the superior design and dimensions, making them more efficient than U Type JIS Piles commonly found in Asia.

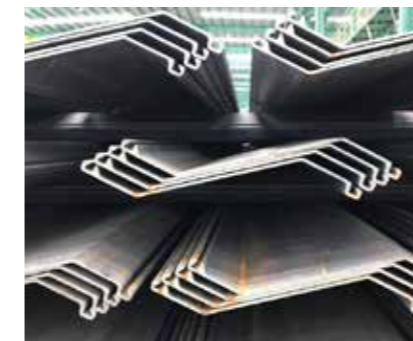
MHZ - Hot Rolled Sheet Piles



MHZ Hot Rolled Sheet Piles

✓ MLION CORPORATION have access to a wide range of Z shape and U shape Hot rolled piles produced in Asia, Middle East and Europe. Our piles have CE and FPC certification and have been regularly exported to Europe and United States. The piles are designed to replace regular sections such as AZ and AU or LX Sections commonly found in desings.

Section	Width w	Height h	Thickness Flange/Web	Section Area	Weight	Weight	Moment of Inertia	Section Modulus
	mm	mm	mm	cm ²	kg/m	kg/m ²	cm ⁴ /m	cm ³ /m
MHZ12-1	770	343.5	8.6/8.5	120.8	72.8	94.5	21496	1252
MHZ13-1	770	344	9.1/9	126.5	76.2	99	22433	1304
MHZ14-1	770	344.5	9.6/9.5	132.2	79.6	103.4	23370	1357
MHZ17-1	700	420	8.5/8.4	132.8	73.3	104.7	36425	1735
MHZ18-1	700	420.5	9.1/9	139.1	76.7	109.6	38001	1807
MHZ19-1	700	421	9.6/9.5	145.4	80.2	114.6	39578	1880
MHZ20-1	700	421.5	10.1/10	151.7	83.7	119.5	41155	1953
MHZ24-2	700	459.2	11.3/11.2	174.4	95.8	136.9	55949	2437
MHZ26-2	700	460.2	12.3/12.2	187.4	103	147.1	59843	2601
MHZ27-1	700	460.7	12.8/12.7	193.6	106.4	152	61641	2676
MHZ28-2	700	461.2	13.3/13.2	200.4	110.1	157.3	63740	2764
MHZ36-1	700	499.2	15.1/11.2	216.1	118.7	169.6	89753	3596
MHZ38-1	700	500.2	16.1/12.2	230.2	126.5	180.7	94984	3798
MHZ40-1	700	501.2	17.1/13.2	244.4	134.3	191.8	100219	3999
MHZ42-1	700	499.2	18.1/14	260.2	143	204.2	105453	4228
MHZ44-1	700	500.2	19.1/15	274.3	150.7	215.3	110942	4436
MHZ46-1	700	501.2	20.1/16	288.5	158.5	226.5	116159	4635
MHZ48-1	700	503.2	22.1/15	290	159.3	227.6	120467	4788
MHZ48-2	580	482	19.2/15.1	307.2	139.9	241.1	115712	4801
MHZ50-1	700	504.2	23.1/16	303.4	166.7	238.2	125358	4973
MHZ52-1	700	505.2	24.1/17	317.2	174.3	249	130403	5162



Manufacturing Standards: EN 10248

- ✓ S270GP / S355GP / S390GP / S430GP
- ✓ Lengths up to 33m long in Single or Double Pile Configuration



Hot Rolled Sheet Piles



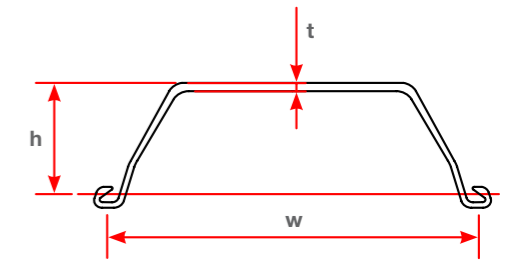
Target

- ✓ Temporary Excavations
- ✓ Underground works
- ✓ Bridges and Piers
- ✓ Cofferdam
- ✓ River Upgrading
- ✓ Flood Control
- ✓ Reclamation
- ✓ Dykes
- ✓ Embankments

JIS Type Sheet piles have been commonly used in Asia and represents the main stay of the sheet pile market. Its 400mm width is easily driven by excavator vibratory hammers and provides good resale value for temporary usage.

JIS Standard Hot Roll Sheet Piles

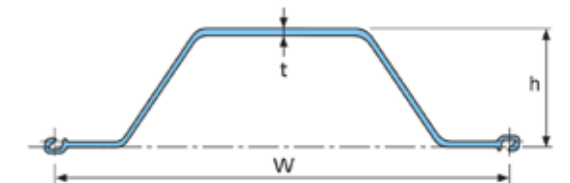
JIS - Hot Rolled Sheet Piles



Section	Width w	Height h	Thickness t	Section Area	Weight	Weight	Moment of Inertia	Section Modulus
	mm	mm	mm	cm ²	kg/m	kg/m ²	cm ⁴ /m	cm ³ /m
IIW	600	130	10.3	78.7	61.8	103	13000	1000
IIIW	600	180	13.4	103.9	81.6	136	32400	1800
IVW	600	210	18.0	135.3	106.0	177	56700	2700
II	400	100	10.5	61.18	48.0	120	8740	874
III	400	125	13.0	76.42	60.0	150	16800	1340
IIIA	400	150	13.1	74.4	58.4	146	22800	1520
IV	400	170	15.5	96.99	76.1	190	38600	2270
VL	500	200	24.3	133.8	105.0	210	63000	3150
VIL	500	225	27.6	153.0	120.0	240	86000	3820

Hat Type Steel Sheet Piles

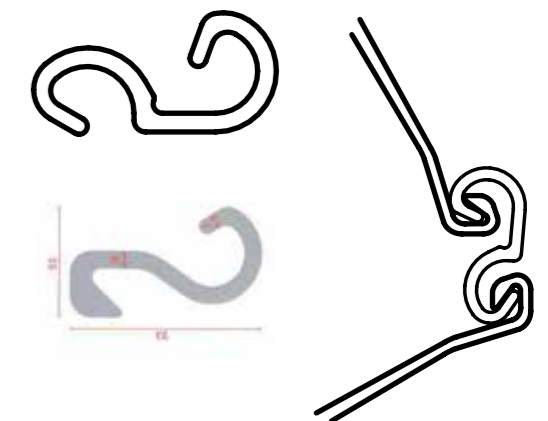
- ✓ 900mm width for faster installation
- ✓ Produced in Japan



Section	Width w	Height h	Thickness t	Section Area	Weight	Weight	Moment of Inertia	Section Modulus
	mm	mm	mm	cm ²	kg/m	kg/m ²	cm ⁴ /m	cm ³ /m
10H	900	230	10.8	110	86.4	96	10500	902
25H	900	300	13.2	144.4	113	126	24400	1610
45H	900	368	15	187	147	163	45000	2450
50H	900	370	17	212.7	167	186	51100	2760

Manufacturing Standards: JIS 5528 or JIS 5523

- ✓ SY 295 / SYW295 and SY390 / SYW 390
- ✓ EN 10248: S355GP
- ✓ Lengths up to 24m long
- *Please enquire for used sheet piles for the following sections.



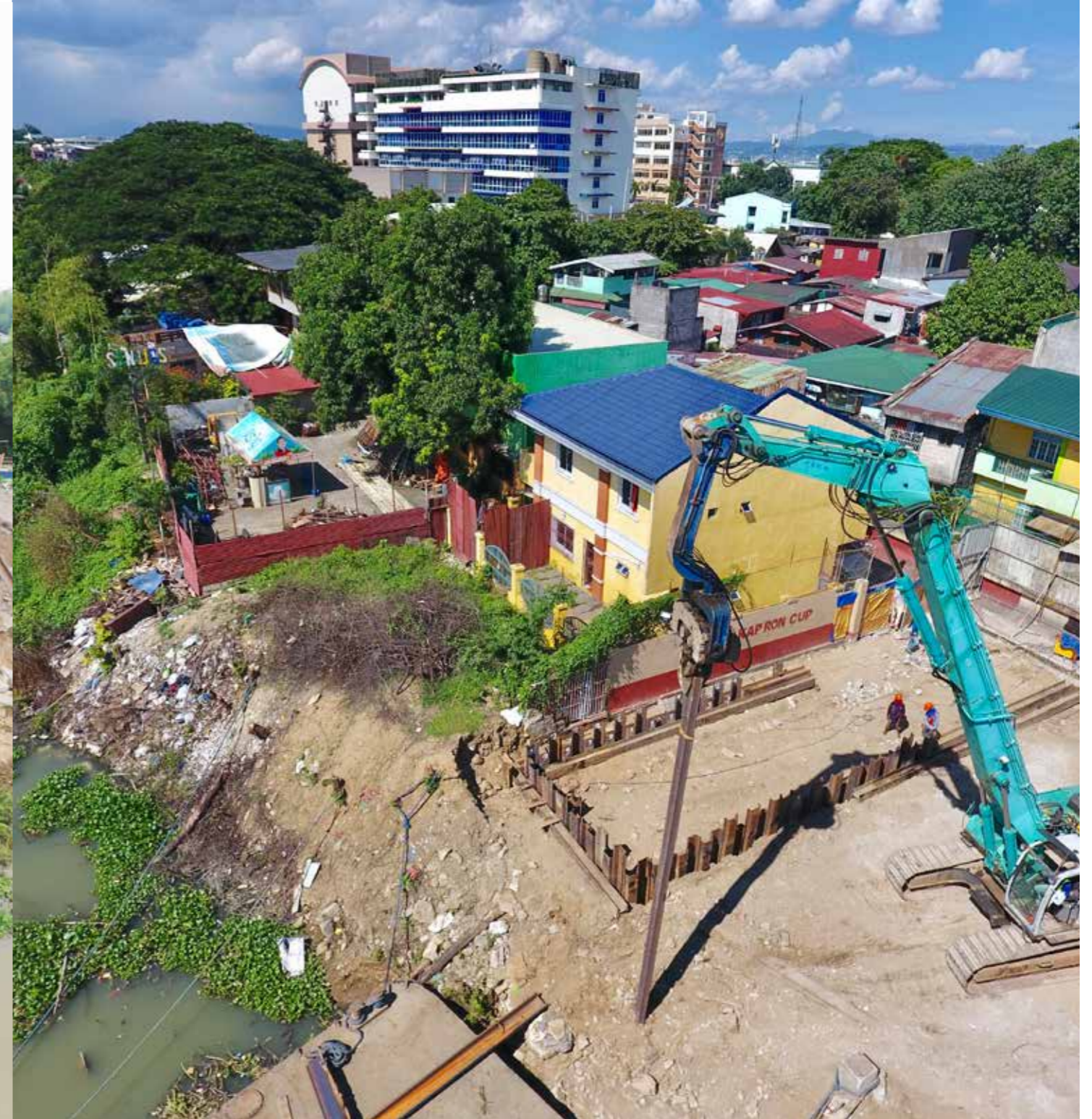
V20 / CP1 Corner Piles

Pampanga River Flood Control



Dike Repair and protection to river bank.
Supplied Hot Rolled Sheet Piles

Manila Water Pumping Station Pasig



Manila Water Pumping Station
Supplied Hot Rolled Sheet Piles